

Corra-Mulling Park, The Gap (north and south oval)



VALLEY DISTRICT
CRICKET CLUB
Est. 1897

98 Yoorala St, The Gap

[Google map, Corra-Mulling Park](#)

- **2 x synthetic turf wickets (narrow)**
- **No nets**
- **Best suited for U10's and U11's**
- No public toilets
- Off street parking: Enter at Corramulling Park Sign - 98 Yoorala St. Same entry as for The Gap Men's Shed.
- Best parking south ground: The Gap Mens Shed entry
- Best parking north ground: Street parking only, walk in via boom gate entry (opposite 51 Yoorala St)
- Ample shade provided by trees

Wittonga Park, The Gap



99 Hilder Road, The Gap

[Google map, Wittonga Park](#)

- **Synthetic turf wicket (wide)**
- **No Nets**
- **Best suits: all ages groups- large field**
- Best Access: Hilder Rd
- Best Parking Hilder Rd (limited) & ample street parking
- Public toilets
- Basketball court
- Kids scooter park/track
- Shade available but mostly well back from ground

Jubilee Park, Bardon (east and west oval)



Access from: **Empress Terrace, Bardon**
Corner of Coronation St, Empress Tce &
Fletcher Parade Bardon
[Google map, Jubilee Park](#)

- **2x Synthetic turf wicket (wide)**
- **No Nets**
- **Suits U10's to U12's**
- Best Access: Coronation St & Empress Tce
- Ample Street parking
- Public toilets
- Ample shade
- Playground

Corbie Park, Ashgrove



Access from: **Raleigh Parade, Ashgrove**
[Google map, Corbie Park](#)

- **Synthetic turf wicket (narrow)**
- **1 x cricket net (half length net only)**
- **Best suits- U10's & 11's**
- Best access: Raleigh Pde, Ashgrove
- Street Parking- Raleigh Pde
- No toilets
- Plenty of shade
- Coffee shop/bakery within walking distance (Gerbino's, 166 Ashgrove Ave)
- Playground and basketball court adjacent to field

Bancroft Park, Kelvin Grove



VALLEY DISTRICT
CRICKET CLUB
Est. 1897

Access From: **Hulme Street, Kelvin Grove**
[Google map, Bancroft Park](#)

- **Synthetic turf wicket- (Wide)**
- **Best suits U10's- small ground**
- **No Nets**
- Best Access: Hulme St
- Best Parking: Hulme St, Street parking only
- Play equipment- shaded
- No public toilets
- Off leash dog area

Fenwick Park, Mitchelton



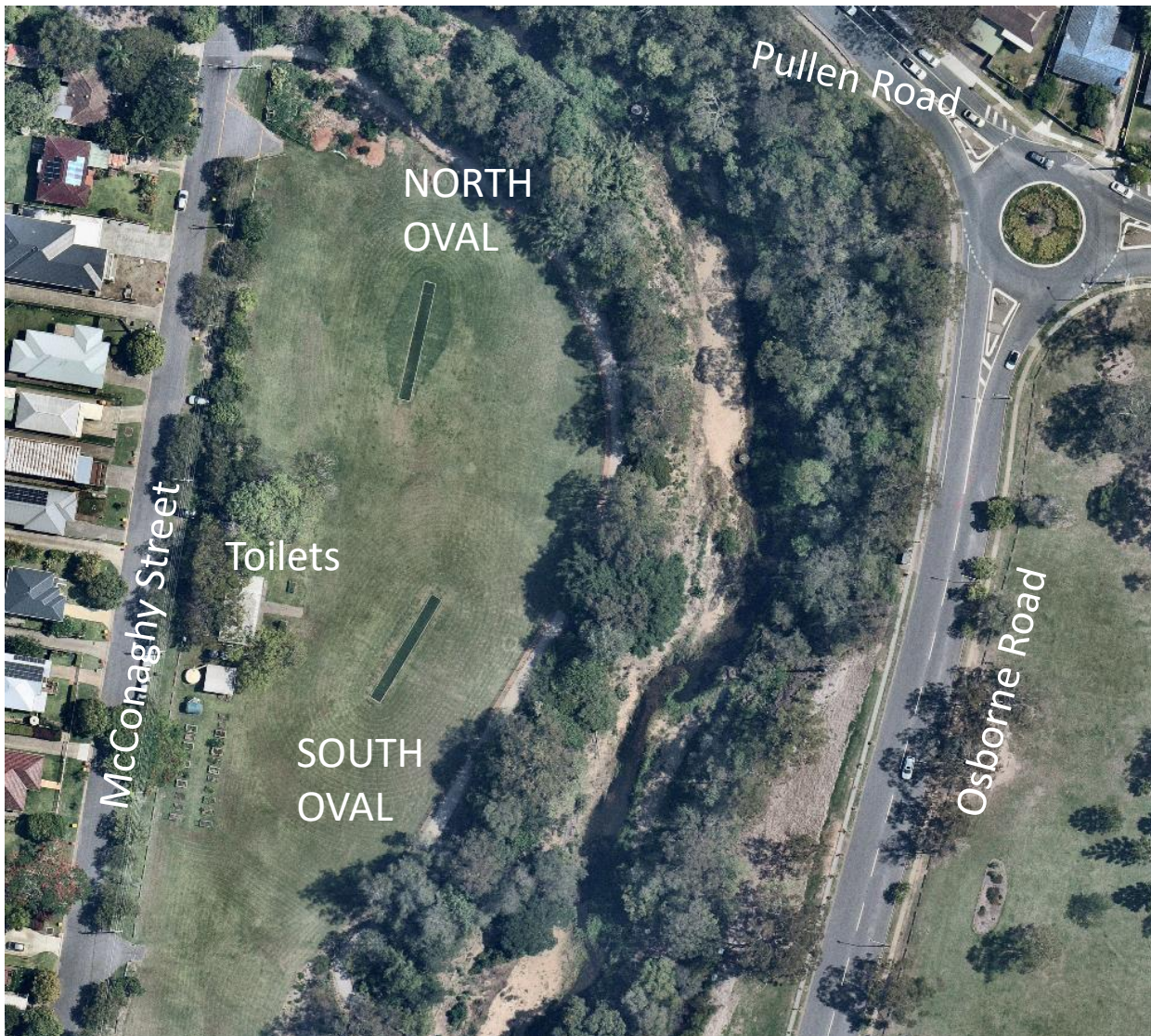
VALLEY DISTRICT
CRICKET CLUB
Est. 1897

Access from: **Glen Retreat Street**
Corner of Samford Rd & Glen Retreat St
Mitchelton

[Google map, Fenwick Park](#)

- **Synthetic turf wicket (narrow)**
- **No nets**
- Best Access: Glen Retreat St
- Best parking in Glen Retreat Street, Hay St, Fenwick St
- Playground
- Public toilets
- Some shade trees
- Half basketball court

McConaghy Street Park, Mitchelton (north and south oval)



VALLEY DISTRICT
CRICKET CLUB
Est. 1897

Access From: **171 McConaghy Street,
Mitchelton**

[Google map, McConaghy Street Park](#)

- **2 x synthetic wickets (Wide)**
- **No Nets**
- **Best suits U10's – small ground**
- **Toilets- **code access only** - Request code from VDCC**
- Nearest cross-road Northmore St, Mitchelton
- Best Access: Northmore St then McConaghy St
- Street parking only
- Some shade available
- Ample open space for children to play